



# CONSUMER CARE & INSTALLATION GUIDE



## CAT A / B Series

216 / 216B / 216B3 / 226 / 226B / 228 / 228B / 232 232B  
/ 236 / 236B / 242 / 242B / 247 / 247B(3) / 248 248B /  
252 / 252B(3) / 257 / 257B / 259 / 259B(3) 262 / 262B /  
267 / 272 / 272B / 277 / 277B  
287 / 287B / 297 / 297B

## **CONSUMER CARE**

Poly Carbonate Lexan is a substance that is far more durable and resistant to impact, shattering or breakage over any other manufacturers tempered glass door specifications.

Your door can still swirl and scratch if you do not properly clean the surface as recommended.

Never wipe your door with a dry fabric or any other type of coarse material.

If you have a motorized wiper installed, it is recommended that you only operate it under wet or rainy conditions.

To clean, rinse off all debris with a power washer or garden hose.

Always wash your windows with a light duty detergent, water and a soft cloth.

Let the door air dry or blow it off with compressed air to avoid surface abrasions.

---

## **CONSUMER WARNING(S)**

Never operate the skid steer loaders hydraulics with the door open.

Failure to do so may cause damage to the door, injury to yourself or others.

---

## **DISCLAIMER INFORMATION**

Skid Steer Doors of North America offers a limited lifetime guarantee against breakage during the course of normal use.

Failure to follow proper safety and operator guidelines can void any warranty if it is determined to be a result of negligence or human error.

---

## **DRILL & TAP**

There is no drilling or tapping required to install the door assembly.

---

## **RETURN & REFUND POLICY**

Equipment must be returned in new and unused condition for a full refund, exceptions are applicable if there is defective parts, materials or other quality controls or concerns.

## **PRE-INSTALLATION STEPS**

Remove any old, aftermarket or factory CAT hardware.

This includes any damaged door, steel door frame, male or female hinges used to mount any old, aftermarket or OEM equipment.

---

## **INSTALLATION**

Follow the simple and easy installation pictorial guide included in this brochure.

We suggest that for your best result you complete your installation with the assistance of another person.

This door kit is engineered to use pre-existing hole locations already on your machine from factory whether you've ever had a door or not on your machine.

We strongly recommend you pre-install all hardware and test fit your door BEFORE peeling any protective films, the finer the adjustments the better the door will operate for you.

---

**Continue to the attached Pictorial Installation Guide**

**SKID STEER DOORS OF NORTH AMERICA INC.  
CAT A / B DOOR INSTALLATION PICTORIAL GUIDE  
MAY 2024**



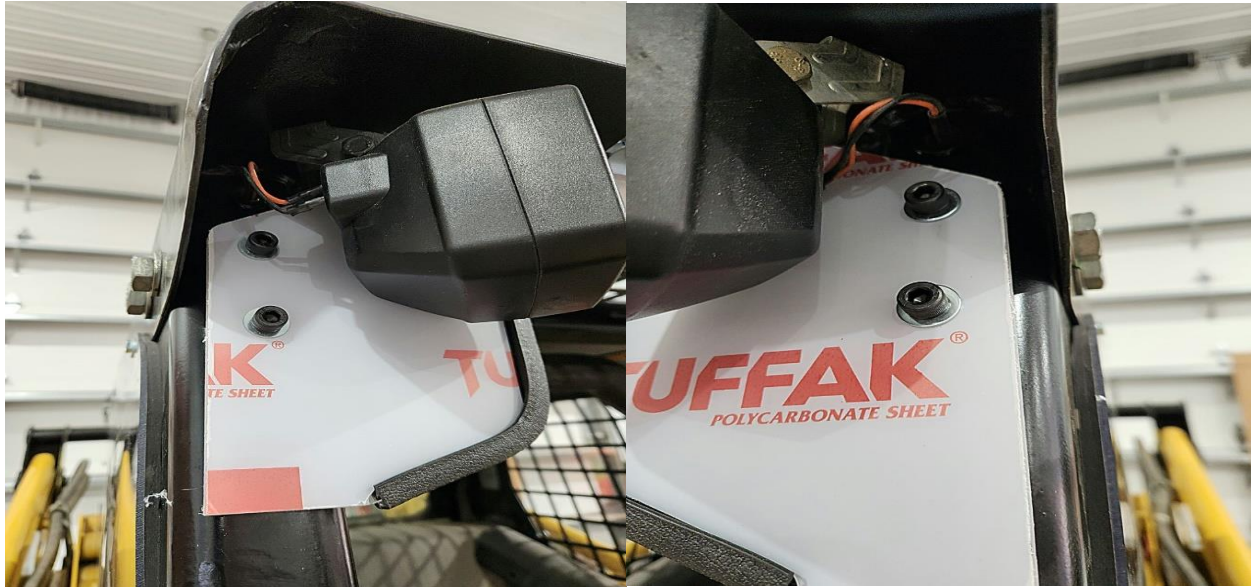
**STEP 1) Remove ALL OEM equipment from your frame rails, you cannot use any previously existing hardware on your CAT A/B retrofit from SKID STEER DOORS of NORTH AMERICA.**



**Step 2 & 3 - Locate your striker mount location, install, adjust and tighten your striker bolt and mount as illustrated above, secure using a 11 mm wrench and driver for this install.**



**Step 3 & 4 – Locate these pre-existing threaded bolt hole locations up near your headlamps.**



**Step 5 & 6 Install and thread these holes with the supplied bolts and washers, tighten with a T40 Allen Key, be careful you don't overtighten and strip your threads.**



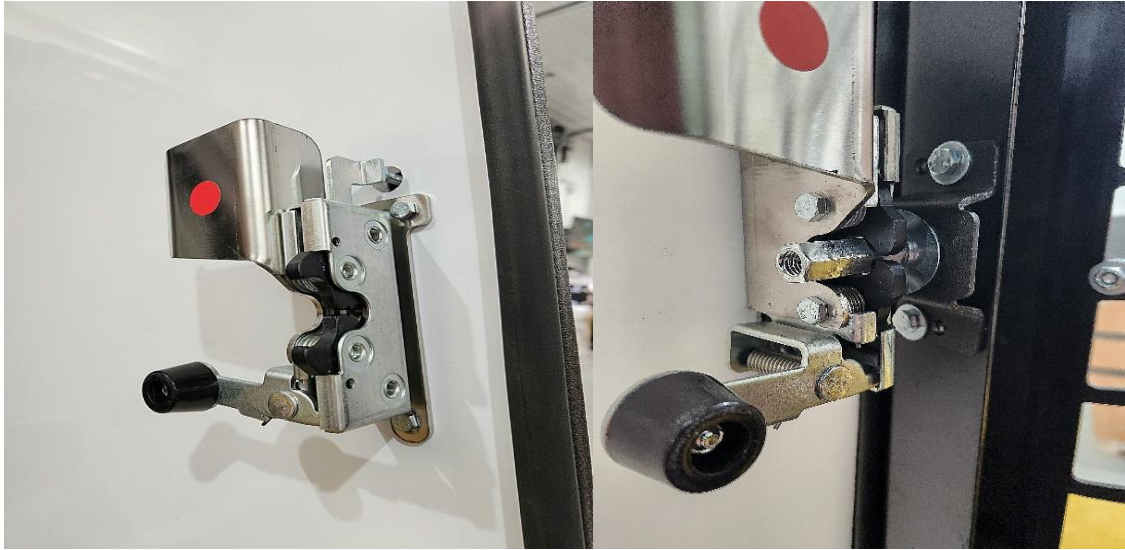
**Step 7 & 8 – Locate these pre-existing hole locations, mount the bottom threshold with the supplied bolts, washers & locknuts, secure these using a 11 mm wrench and driver.**



**Step 9 & 10 – Locate these pre-existing side mount hole locations, attach your new hinge brackets as seen above, seat the brackets and let them rest on the bolts before securing, adjust accordingly for your best final fit.**



**Step 11 & 12 – After mounting your male door hinge pins, drop the door onto the newly mounted side hinge brackets before adjusting your headlamp forward, if its done properly and there is no damage to your equipment, there will be no interferences with the door and your headlamps.**



**Step 13 & 14 – Install your handle, stainless steel pull / release latch as seen above in the left image, adjust these parts accordingly for the best fit, any door that is properly installed and secured should latch as seen above in the right image.**



**Step 15 – Your final inspection of your door installation should look as seen above, we recommend you follow the process suggested to ensure the desired result is achieved, once this has been done, you can loosen your secured points to peel the protective films for final and permanent install.**