



# CONSUMER CARE & INSTALLATION GUIDE



## ALPHA MAX for CASE SERIES

SR / SR B  
TR / TR B  
TV / TV B

## **CONSUMER CARE**

Poly Carbonate Lexan is a substance that is far more durable and resistant to impact, shattering or breakage over any other manufacturers tempered glass door specifications.

Your door can still swirl and scratch if you do not properly clean the surface as recommended.

Never wipe your door with a dry fabric or any other type of coarse material.

If you have a motorized wiper installed, it is recommended that you only operate it under wet or rainy conditions.

To clean, rinse off all debris with a power washer or garden hose.

Always wash your windows with a light duty detergent, water and a soft cloth.

Let the door air dry or blow it off with compressed air to avoid surface abrasions.

---

## **CONSUMER WARNING(S)**

Never operate the skid steer loaders hydraulics with the door open.

Failure to do so may cause damage to the door, injury to yourself or others.

---

## **DISCLAIMER INFORMATION**

Skid Steer Doors of North America offers a limited lifetime guarantee against breakage during the course of normal use.

Failure to follow proper safety and operator guidelines can void any warranty if it is determined to be a result of negligence or human error.

---

## **DRILL & TAP**

There is drilling & tapping required to install the door assembly.

---

## **RETURN & REFUND POLICY**

Equipment must be returned in new and unused condition for a full refund, exceptions are applicable if there is defective parts, materials or other quality controls or concerns.

## **PRE-INSTALLATION STEPS**

Remove any old, aftermarket or factory CASE hardware with the exception of the factory steel male hinges.

This includes any damaged door, steel door frame, any female hinges used to mount any old, aftermarket or OEM equipment.

---

## **INSTALLATION**

Follow the simple and easy installation pictorial guide included in this brochure.

We suggest that for your best result you complete your installation with the assistance of another person.

This door kit is engineered to use pre-existing hinge locations already on your machine from factory.

We strongly recommend you pre-install all hardware and test fit your door BEFORE peeling any protective films, the finer the adjustments the better the door will operate for you.

---

## **End of Consumer Care Information**





## CASE ALPHA MAX DOOR PICTORIAL GUIDE

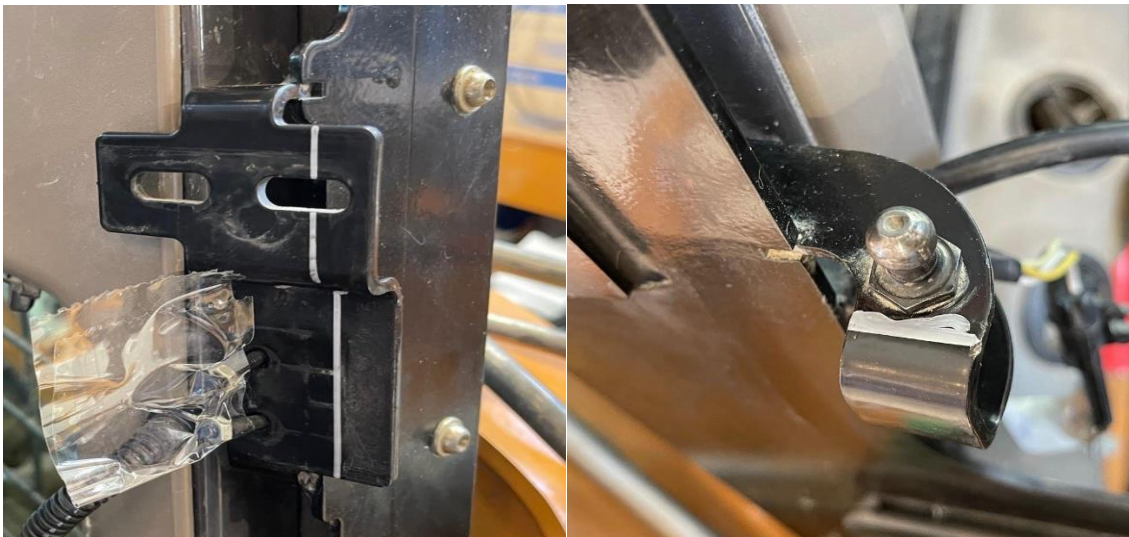
### JUNE 2024



**STEP 1) Remove ALL OEM equipment from your frame rails, you cannot use any previously existing hardware on your CASE SR / TR / TV retrofit from SKID STEER DOORS of NORTH AMERICA.**



**Step 2, 3 & 4 – Undo the air shock from the shock mount tower, locate your factory striker latch and remove. Locate and remove the magnetic door safety switch.**

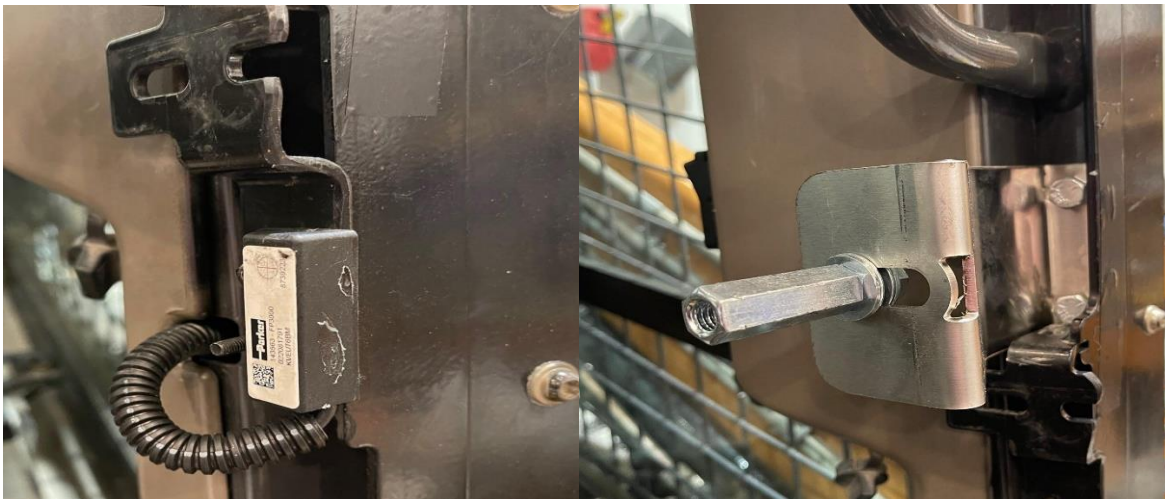


**Step 5 & 6 – Locate your previous striker plate and shock tower mount, these locations will need to be trimmed back to allow for proper clearance of your new door which is flat, mark your trim line with a silver marker or paint pen, we recommend you cut this with a angle wheel grinder to get the best finish.**

**NOTE : This will not affect future re-installation or operation of another factory  
CASE OEM Door.**



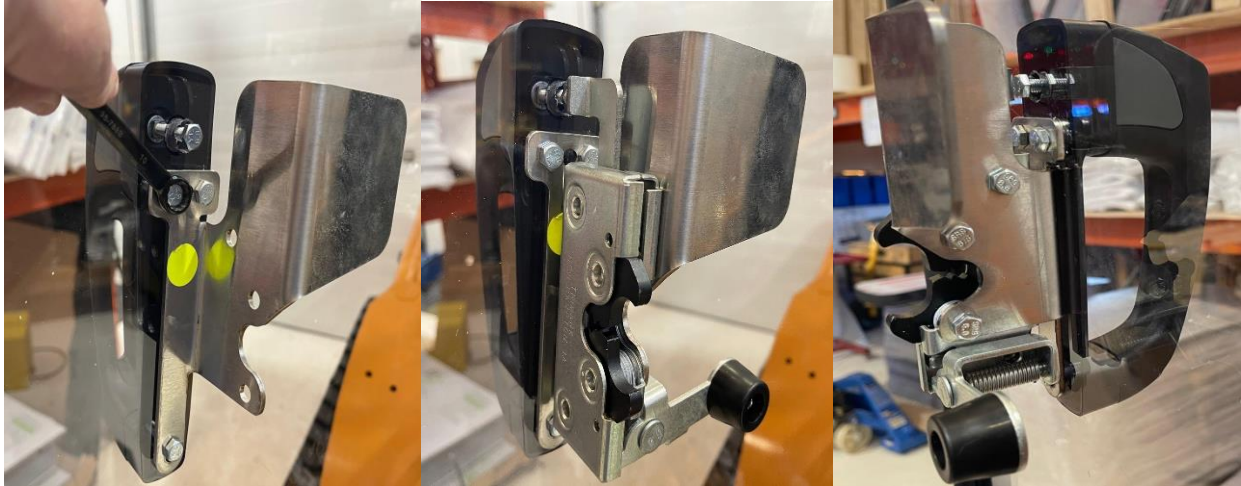
**Step 7 & 8 – Touch up area with black paint if desired.**



**Step 9 & 10 – Re-install your magnetic safety door switch, rest your new Stainless Steel Z bracket ontop of your old striker mount, there mark your hole locations.**

**Drill these locations with the drill bit provided.**

**Take the tap tool and carefully thread these hole locations, use low rpm speed to thread, remove the tap tool by reversing the chuck slowly, now thread and tighten with the bolts provided.**



**Step 11 – After mounting your door on the pre-existing factory male hinges, install your door handle, latch and stainless pull mechanism as depicted in images above, adjust as needed for best fit and acceptance of striker bolt.**



**Step 12 – Your final inspection of your door installation should look as seen above, we recommend you follow the process suggested to ensure the desired result is achieved, once this has been done, you can loosen your secured points to peel the protective films for final and permanent installation.**